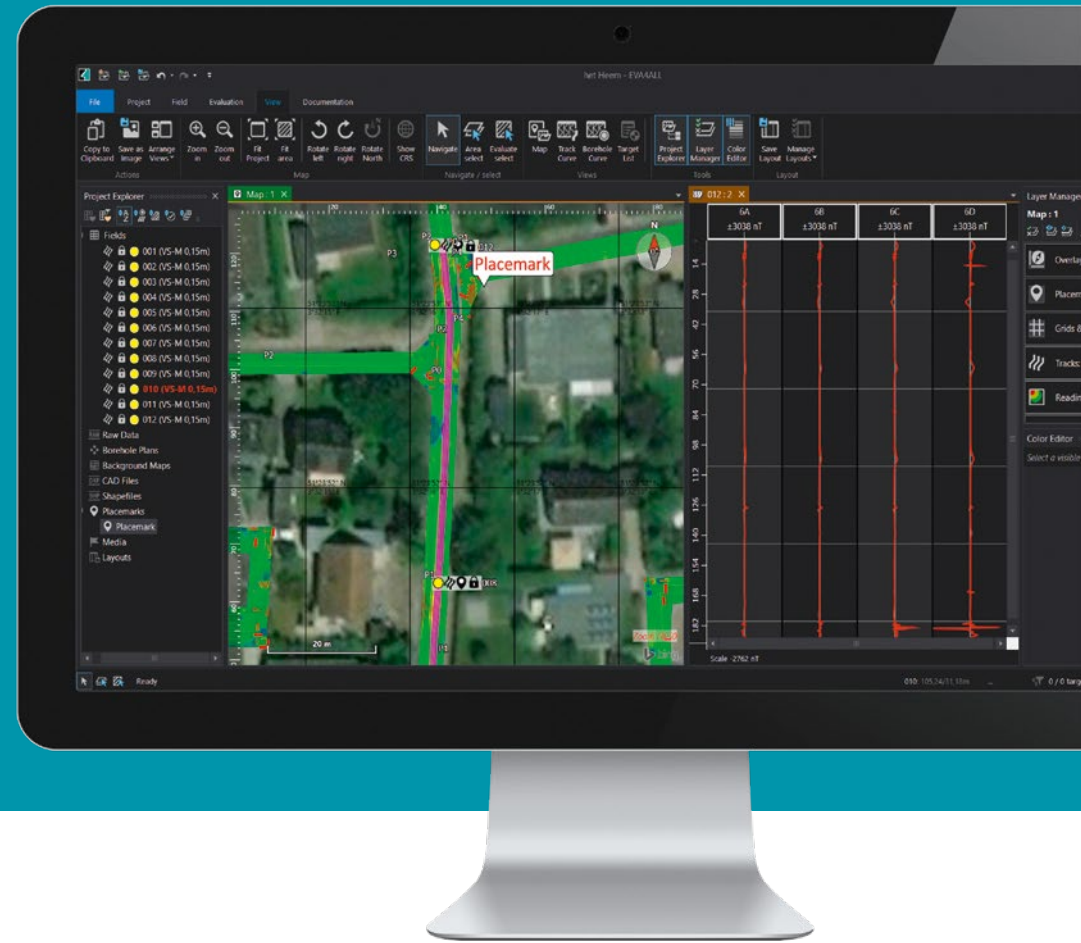


EVA4ALL®

Software Solution for Microsoft Windows
for Display, Georeferencing, Evaluation and
Documentation of Surface and Borehole Data



The New Standard

Software Solution for Microsoft Windows for Display, Georeferencing, Evaluation and Documentation of Surface and Borehole Data

The innovative software solution sets new standards for displaying and handling continuously growing data volume of today's large-scale projects.

The groundbreaking user interface offers maximum flexibility and allows different approaches when implementing projects. The modern user interface of EVA4ALL® enables the processing of data field-related as well as project-related. Even highly complex data packet can be processed clearly and evaluated quickly.

- ✓ EVA4ALL® sets new standards for displaying and handling large data volume
- ✓ Well-structured processing of surface and borehole data – whether from active or from passive detectors
- ✓ Innovative new functions for evaluation and visualization of data
- ✓ Simplified calculation of objects – manually or automatically depending on the requirement
- ✓ Tailored project report at the push of a button
- ✓ Simple transition – EVA4ALL is downward compatible to previous VALLON hard- and software
- ✓ Support and all future updates are included



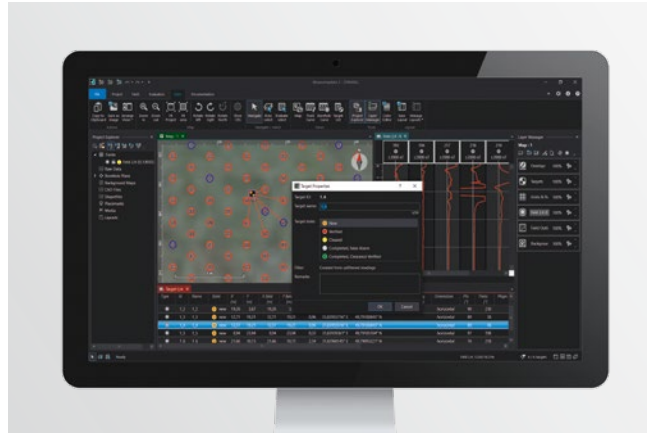
Hardware requirements (recommendation): Operating system Windows 10, .NET Framework 4.7 or later, Prozessor Intel i5, 8 GB RAM, Screen resolution 1366 x 768 Pixel

Ready For All Challenges

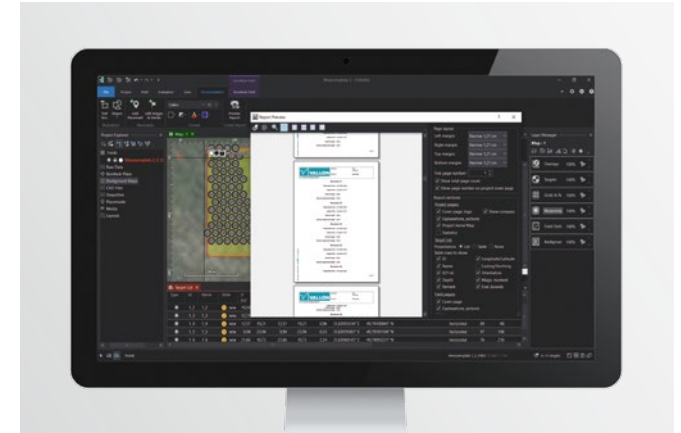
EVA4ALL® sets new standards in the display and handling of large data volumes



Placement of marker with simultaneous display of measured data, track views, etc.



Speedy object calculation, including from georeferenced borehole data



Simple creation of customizable project reports for immediate output of documentation

Flexible interfaces

Extensive import and export features facilitate cross-platform work. This applies to the export of commonly used data formats for further processing in third party software as well as to the compatibility to previous VALLON products. As a result, data from the field computer VFC2 and existing EVA2000 projects can be imported without any problem.

Tools for georeferencing

Besides the possibility to include georeferenced maps into the project display, the software offers extensive tools and high-quality maps. In case an internet connection is available, the full functional range of Bing Maps can be used. The likewise integrated access to OpenStreetMap also offers an offline mode.

Automated documentation

The integration of a largely automatic documentation was carried out in close cooperation with long-standing customers. Creating individual reports was simplified and accelerated considerably through an optimized workflow.

Customer satisfaction is top priority at VALLON

The support and all future updates are already included. VALLON offers with EVA4ALL® a state-of-the-art and future-oriented software. Wishes and suggestions are continuously incorporated into the further development and will be included in new releases.

VALLON – A strong Partner

Nothing can replace experience

As a family-run business from Eningen in Germany we became a global player within the field of explosive ordnance detection and the assessment of contaminated sites. All our activities focus on providing our customers with the best product for the respective application.

✓ GUIDANCE

From the initial contact to the selection of the optimal detector system and to the point of the professional start of operation – VALLON accompanies the complete process and supports you in a competent and professional manner.

✓ DETECTORS

Our product portfolio includes efficient solutions for detecting mines, improvised explosive devices (IEDs) and unexploded ordnance (UXO) – for the use on land, underwater and in boreholes.

✓ SOFTWARE

With the EVA4mobile® and the EVA4ALL® VALLON offers powerful software for data acquisition, evaluation and documentation. The firmware of VALLONs fourth generation of metal detectors is subject to continuous further development and can be adapted to satisfy specific customer requirements.

✓ TRAINING

In order to optimally prepare the user for their daily work VALLON offers custom-tailored training. The training courses can take place upon agreement on site or directly at VALLON in Eningen, Germany.





THE PATH TO BECOMING A GLOBAL PLAYER

The multisensor vehicle (MSV7) realized in 1994 was a steerable trailer system with 7 probes and data recording devices for large-scale area detection. Thanks to the measurement curves displayed on the field computers (MC1), the positions of individual UXOs could be determined. The positioning system SEPOS® ensured the necessary measurement accuracy.

Learn more under
www.vallon.de/en/history



Vallon GmbH
Arbachtalstraße 10
72800 Eningen, Germany
Phone +49 7121 9855-0
info@vallon.de
www.vallon.de